

# ALPHA MINI Track 48Vdc (Ad. Bin. 01-06-13 Nero o Bianco) **340BB01L11** **340BB02L11**



## Descrizione del prodotto / Product description

Proiettore LED direzionabile da interno per binari elettrificati a bassa tensione 48Vdc. Ideale per l'illuminazione d'accento.

Corpo realizzato da tornitura di alluminio verniciato. Disponibili varie ottiche in PMMA trasparente.

Anello frontale antiglare in alluminio anodizzato nero con finitura personalizzabile a richiesta.

Sorgente COB LED con LES ridotta. Fornito con adattatore per binari in tensione costante "Stucchi".

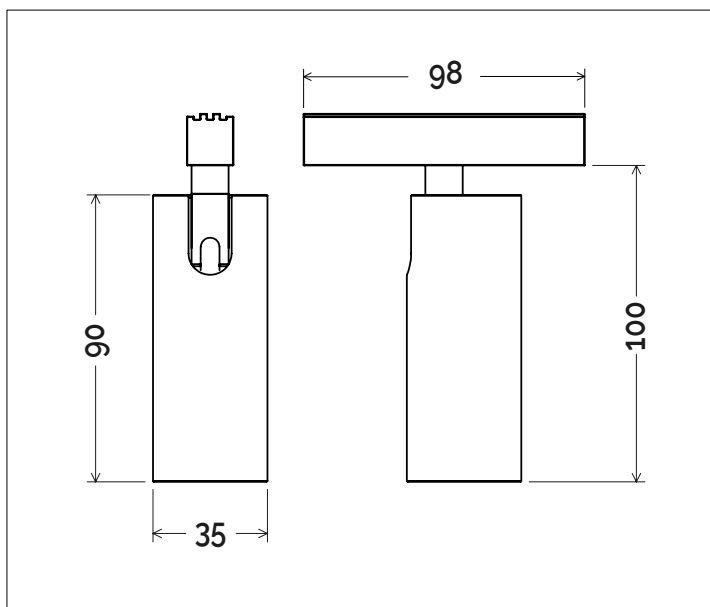
Adjustable LED projector for indoor for track or ceiling system. Ideal for accent light.

Body made of turning aluminum with painted finish.

Spot optics made of clear PMMA and anti-glare ring made of anodized aluminum with customizable finish. COB LED source with LES reduced.

COB LED source with LES reduced.

Supplied with "Stucchi" constant voltage track adapter.



## Dati tecnici | Technical Info

\* su richiesta / on requests

Finiture   Finishes	○ 4001 Bianco   White
	● 4002 Nero   Black
	● 4010 Oro   Gold
	● 4011 Bronzo   Bronze
	● Verniciati RAL   RAL Paintings*
Potenza   Power	6W
Corrente   Current	-
Tensione   Voltage	48Vdc
Tolleranza cromatica   Chromatic tolerance	3 SDCM
Flusso luminoso   Luminous Flux	664lm
Mantenimento del flusso luminoso   Flux Maintenance	≥50.000h
Temperature di esercizio   Operating temperature	-20° ~ 45°

## Simbologia tecnica Technical informations

	Conforme alle direttive CE
	Conforme alle normative RoHs
	Classe III
<b>IP20</b>	Indice di Protezione IP20

## Temperatura di Colore Color Temperature

<b>9027</b> - 2700K CRI 92
<b>9030</b> - 3000K CRI 92
<b>9040</b> - 4000K CRI 92

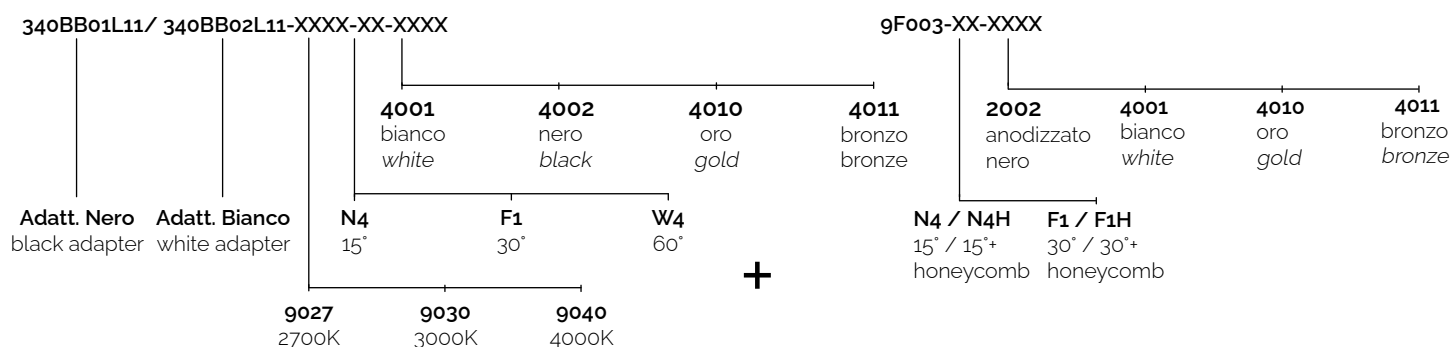
## Ottiche Optics

	<b>N4</b> - 15° (Narrow Beam)
	<b>F1</b> - 30° (Flood Beam)

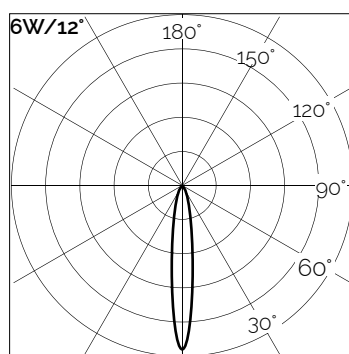
## Sistemi di Controllo Control System

	<b>On / Off</b> (remoto escluso / remote excluded)
<b>PUSH</b>	<b>Push *</b> (remoto escluso / remote excluded)
	<b>DALI *</b> (remoto escluso / remote excluded)
	<b>Casambi Bluetooth *</b> (remoto escluso / remote excluded)

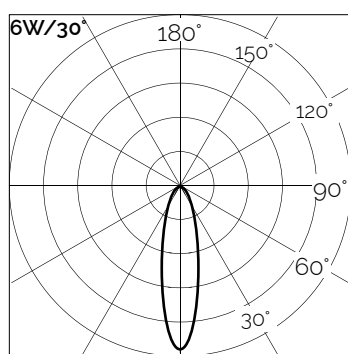
## Creazione Codice | Code construction



## Dati Fotometrici | Photometric Specification



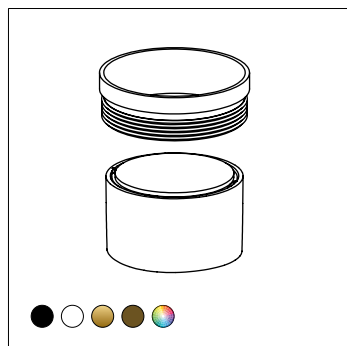
h (m)	E (lx)	D (cm)
1	4359	21
1.5	1875	31
2	1035	42
2.5	657	52
3	456	63



h (m)	E (lx)	D (cm)
1	1453	53
1.5	625	80
2	345	107
2.5	219	133
3	152	160

## Accessori | Accessories

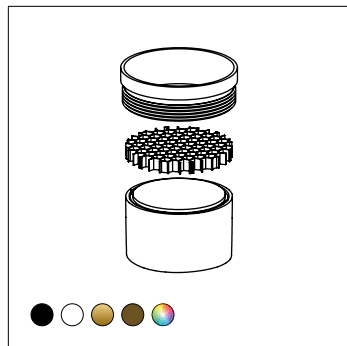
### 9F003



Ottica + Anello riflettore

Optic + Lock ring

### 9F003



Ottica + Anello riflettore+ honeycomb

Optic + Lock ring+ honeycomb